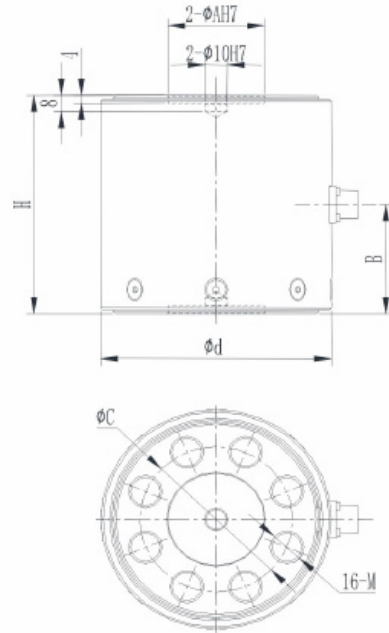


TF



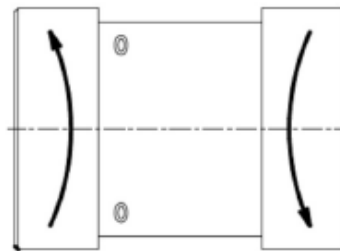
Specifications		TF
Capacity	kN.m	0.2, 0.3, 0.5, 1, 1.5, 2, 4, 5, 6, 10
Sensitivity	%mV/V	1.5±10
Zero balance	%F.S.	± 2
Non-linearity	%F.S.	0.1
Hysteresis	%F.S.	0.1
Repeatability	%F.S.	0.05
Creep(30min)	%F.S.	0.1
Temp.effect on output	%F.S./10°C	0.05
Temp.effect on zero	%F.S./10C°	0.05
Input impedance	Ω	410 ± 20
Output impedance	Ω	350 ± 10
Insulation		≥5000M Ohm/100VDC
Recommended excitation	V	5-15
Maximum excitation Voltage	V	20
Compensated temp. range	°C	-10 – 60
Operating temp. range	°C	-20 – 80
Safe load limit	%F.S.	120
Breaking load	%F.S.	150
Cable size	mm	3 × 4000
Weight approx.	kg	0.2
Material		aluminum alloy
IP Class		IP65

Cap (kNm)	H	d	A	B	C	M
0.2, 0.3, 0.5	82	73	30	41	45	M10deep15
1, 1.5, 2	107	107	45	54	71	M16deep22
4, 5, 6	130	141	60	65	95	M20deep25
10	170	205	120	85	155	M24deep35

Features & Applications

- Static torque sensor
- Compact structure
- Easy to install
- IP65 protection
- Used for static, non-continuous rotational torque force measurement

Load Direction



Wiring Code

