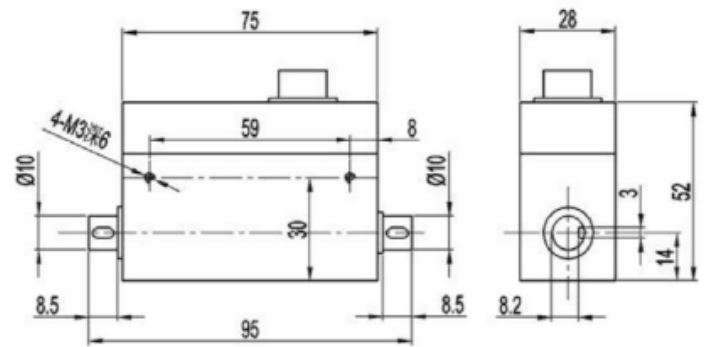
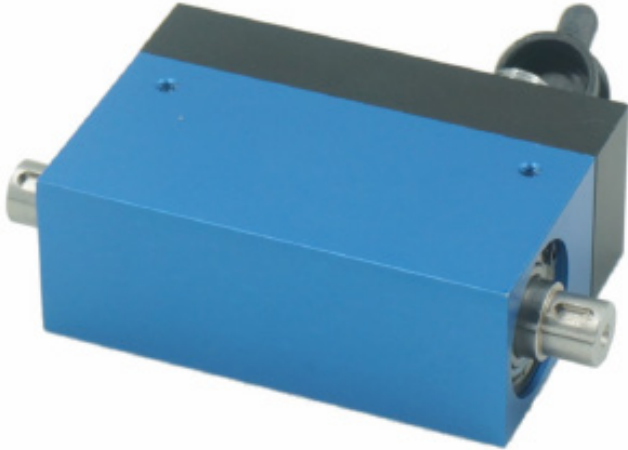


## TD



Specifications		TD
Capacity	N.m	0.1, 0.2, 0.3, 0.5, 1, 2, 3, 5
Sensitivity	mV/V	1.0 ?1.5
Zero balance	%F.S.	± 1
Non-linearity	%F.S.	0.2
Hysteresis	%F.S.	0.2
Repeatability	%F.S.	0.1
Creep(30min)	%F.S.	0.2
Temp.effect on output	%F.S./10°C	0.1
Temp.effect on zero	%F.S./10C°	0.1
Input impedance	Ω	350 ± 10
Output impedance	Ω	350 ± 10
Insulation		≥2000M Ohm/100VDC
Recommended excitation	V	12
Maximum excitation Voltage	V	20
Compensated temp. range	°C	-10 – 60
Operating temp. range	°C	-30 – 60
Safe load limit	%F.S.	120
Breaking load	%F.S.	150
Cable size	m	3
IP Class		IP66

### Features & Applications

- The resistance strain is an integrated product consisting of ensitive components and integrated circuits
- High accuracy, stable and reliable performance
- Brush power supply, can measure the positive and negative two direction torque value
- The two ends are connected by keys, the installation and usage are convenient
- The highest measuring speed is 4000 rpm

### Wiring Code

